

PTZ Virtual USB Driver Operations Manual

Introduction

PTZ Virtual USB Driver is a software program that runs on Windows.

By running this software on a Windows computer, you can let Windows recognize the Panasonic camera connected to the computer on network (hereinafter referred to as the “Network Camera”) as the virtual USB camera, and you can use this camera.

Main features

Features of this software program are as follows:

- **Converts the Network Camera into the virtual USB camera**

Let Windows recognize the Network Camera as the virtual USB camera. This makes it possible to use video and audio of the Network Camera in various Windows applications such as video distribution and video recording of the USB camera.

- **Supports video and audio of H.264 stream**

You can receive video and audio of H.264 stream on the Network Camera, and use them in Windows applications.

- **You can register up to five Network Cameras**

You can register up to five Network Cameras.

- **Automatic detection of Network Cameras**

You can automatically detect and register cameras connected on the network.

Operating environment

The following environment is required for using this software.

- OS

Windows 8.1 64bit

Windows 10 64bit

Windows 11

- Computer

CPU: Core i5-7300U (2.60 GHz) and above

Memory: 4GB and above

The software supports the following camera products (As of April 2022).

* For the latest support models, please check the PTZ Virtual USB Driver product page on the following website.

<https://pro-av.panasonic.net/en/>

- Panasonic's network compliant cameras

PTZ camera

- AW-UE150/155
- AW-UE100
- AW-HE130/AW-HN130
- AW-HR140
- AW-UE80/AW-UE50/AW-UE40
- AW-UE70/AW-UN70
- AW-UE20
- AW-HE40/70/65, AW-HN40/70/65
- AW-HE42/75/68
- AW-HE20
- AW-UE4

POVCAM

- AG-UMR20/AG-UCK20
- AG-MDR25/AG-MDC20

CX Camera Recorder

- AJ-CX4000 / AJ-UPX900
- AG-CX350 / AG-CX200 / AJ-UPX360
- AG-CX10 / AG-CX98

<Notes>

- Please update the firmware of the camera to the latest version before using it. You can download the firmware from the following website.

<http://pro-av.panasonic.net/en/>

Description given in this file

- Illustrations and images shown in this file may differ from the actual images.
- In this file, personal computer is mentioned as “PC”.

Registrations and registered trademarks

- Microsoft, Windows are the registered trademarks of Microsoft Corporation of the United States.
- Intel and Intel Core i5 are trademarks or registered trademarks of Intel Corporation and its subsidiaries in the United States of America and other countries.
- Other names, company names, product names, and the like mentioned in this document are trademarks or registered trademarks of the respective company. In this document, the TM and ®mark is not shown.

Initial settings of the camera

Before using this software, it is necessary to appropriately make the H.264 stream settings on the Web screen of the Network Camera.

Parameters to be set may differ depending on the model of the Network Camera.

This section shows setting procedure of various models.

- The models listed in this manual are as of April 2022.
Please check the PTZ Virtual USB Driver product page on the following website for the setting procedure of the latest model.
<https://pro-av.panasonic.net/en/>

H.264 setting conditions (PTZ camera, POVCAM)

This software receives H.264 stream of the Network Camera and fetches video and audio.

When using this software, H.264 stream settings should satisfy all of the following conditions.

- H.264 transmission
Out of H.264 (1) through H.264 (4), one or more should be turned on.
- Image capture size
It should be set to either of the following.
3840x2160 / 1920x1080 / 1280x720 / 640x360 / 320x180
- Transmission priority
It should be set to the following.
Frame rate
- Frame rate
It should be set to either of the following.
60fps / 50fps / 30fps / 25fps / 24fps / 15fps / 12.5fps / 5fps
- Audio encoding format (Only in the case of AW-HE130/AW-HN130, AW-HR140)
It should be set to the following.
AAC-LC (High quality)

H.264 setting conditions (CX Camera Recorder)

This software receives H.264 stream of the Network Camera and fetches video and audio.

When using this software, H.264 stream settings should satisfy all of the following conditions.

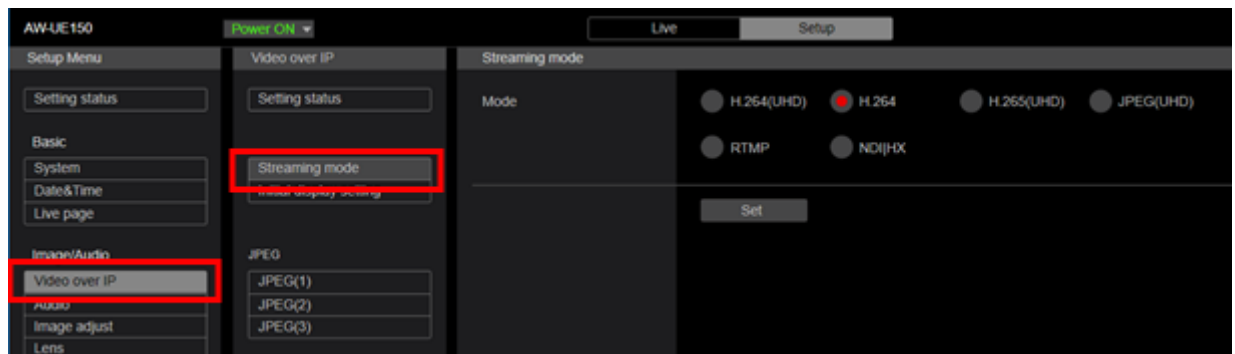
- NETWORK -> NETWORK FUNC
It should be set to "STREAMING".
- NETWORK -> STREAMING -> STREAMING FORMAT
It should be set to either of the following.
1920x1080 / 1280x720 / 640x360 / 320x180
- NETWORK -> STREAMING -> START TRIGGER
It should be set to "RECEIVER".
- NETWORK -> STREAMING -> RTSP PORT
It should be set to "554".

Settings of AW-UE150/155, AW-UE100

1. Start web browser.
2. In the URL field of web browser, enter the IP address of the Network Camera.
3. The Web screen of the Network Camera will open. Click the Setup button located on top center.

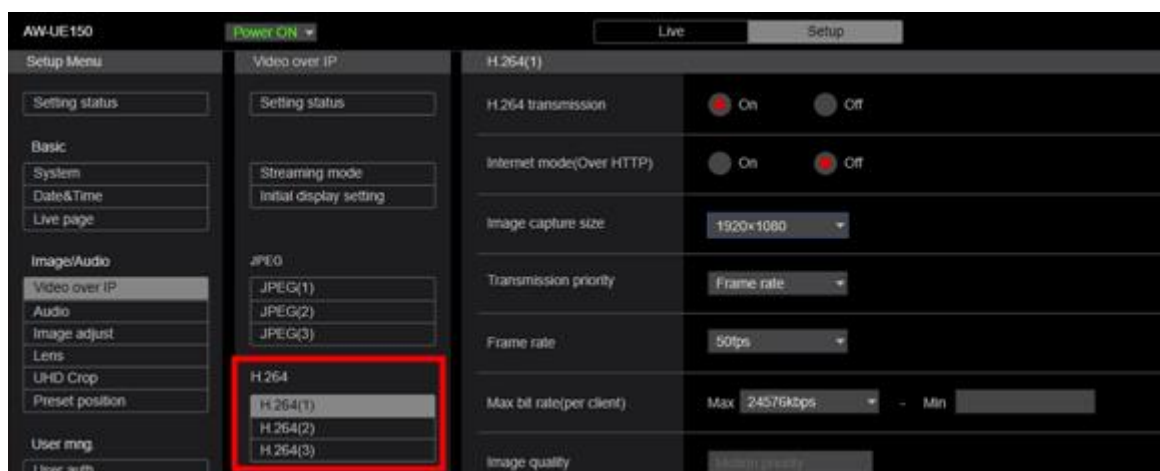


4. Camera's account and password confirmation screen will appear. Enter your account name and password.
5. Click the [Video over IP] button on the left side of the Setup screen and click the [Streaming mode] button in the [Video over IP] menu. The Streaming mode setting screen is displayed. Set either "H.264 (UHD)", "H.264", "JPEG (UHD)", "NDI | HX". After setting the parameters, click the Set button and save the settings.



6. Set the operation of H.264 (1) through H.264 (4) or NDI | HX stream in the [Video over IP] menu. After setting the parameters, click the Set button and save the settings.

- When Streaming mode is "H.264 (UHD)", "H.264", "JPEG (UHD)"



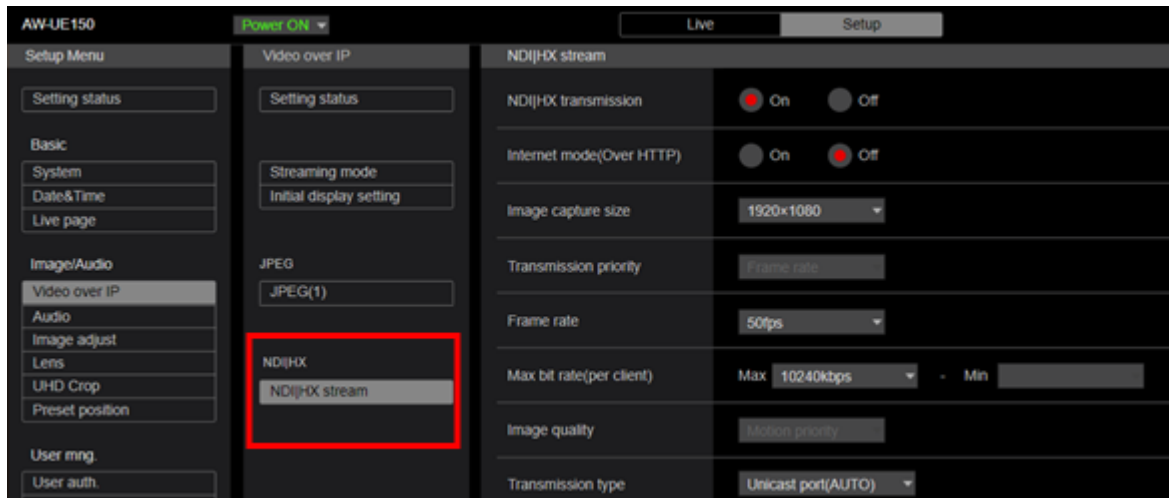
H.264 transmission: Turns on the stream you want to use.

Image capture size: Sets the resolution within the range that satisfies the conditions described in "H.264 setting conditions" in this section.

Transmission priority: Set it to "Frame rate".

Frame rate: Sets the frame rate within the range that satisfies the conditions described in “H.264 setting conditions” in this section.

- When Streaming mode is "NDI|HX"



NDI|HX transmission : Set it to On.

Image capture size: Sets the resolution within the range that satisfies the conditions described in “H.264 setting conditions” in this section.

Frame rate: Sets the frame rate within the range that satisfies the conditions described in “H.264 setting conditions” in this section.

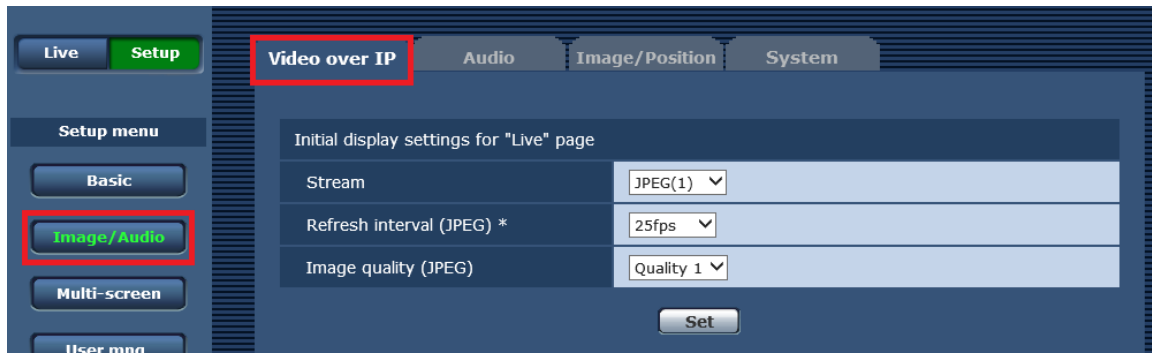
7. With this, the setting is complete.

Settings of AW-HE130/AW-HN130, AW-HR140

1. Start web browser.
2. In the URL field of web browser, enter the IP address of the Network Camera.
3. The Web screen of the Network Camera will open. Click the Setup button located on top left.



4. Camera's account and password confirmation screen will appear. Enter your account name and password.
5. Click the [Image/Audio] button on the left side of the Setup screen and select the [Video over IP] tab located at the top of the screen that appears.



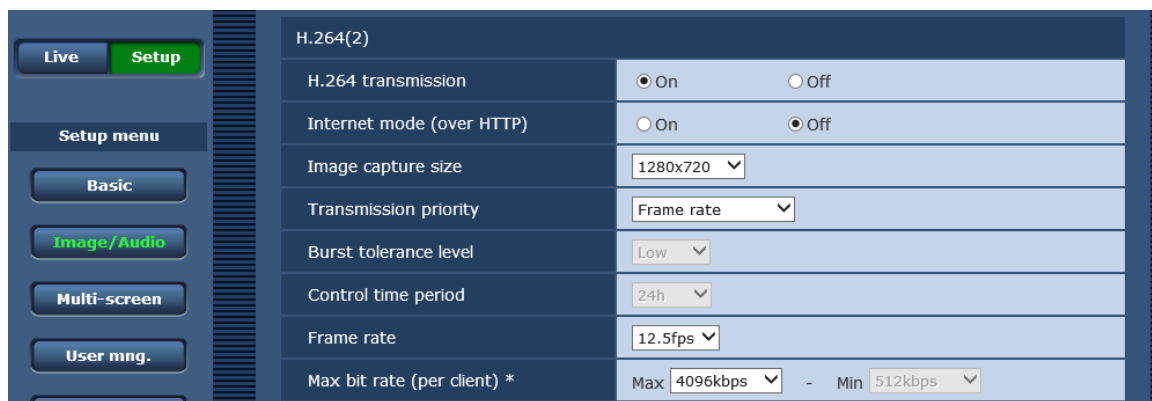
- Set the operation of H.264 (1) through H.264 (4) in the [Video over IP] tab. When using this software, it is necessary to make settings so that the following parameters satisfy the conditions described here. After setting the parameters, click the Set button and save the settings.

H.264 transmission: Turns on the stream you want to use.

Image capture size: Sets the resolution within the range that satisfies the conditions described in “H.264 setting conditions” in this section.

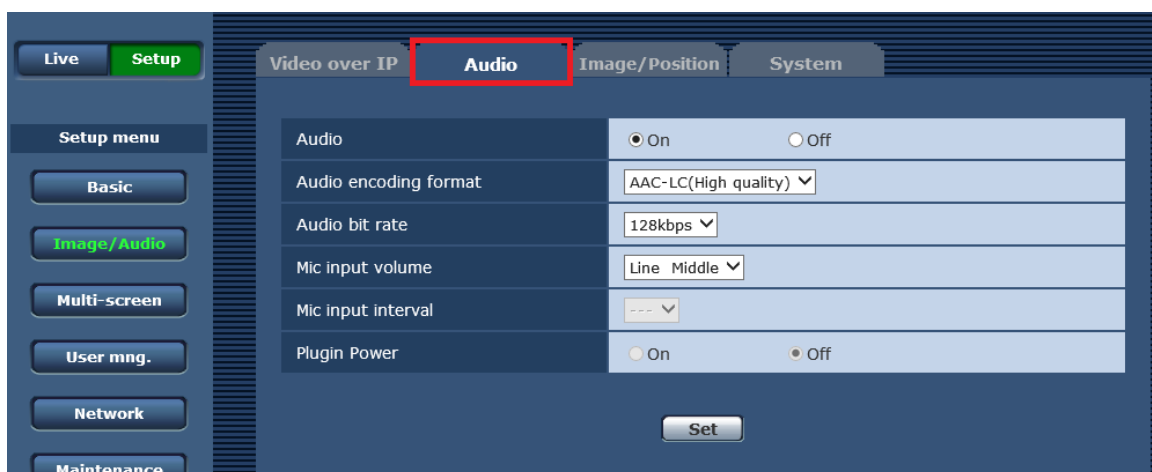
Transmission priority: Set it to “Frame rate”.

Frame rate: Sets the frame rate within the range that satisfies the conditions described in “H.264 setting conditions” in this section.



- Select the [Audio] tab located at the top of the screen and set the Audio parameters. When using this software, it is necessary to make settings so that the following parameters satisfy the conditions described here. After setting the parameters, click the Set button and save the settings.

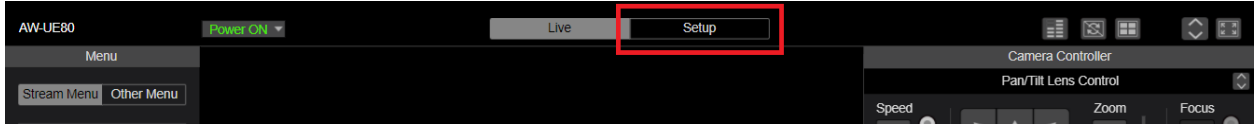
Audio encoding format: Set to “AAC-LC (High quality)”.



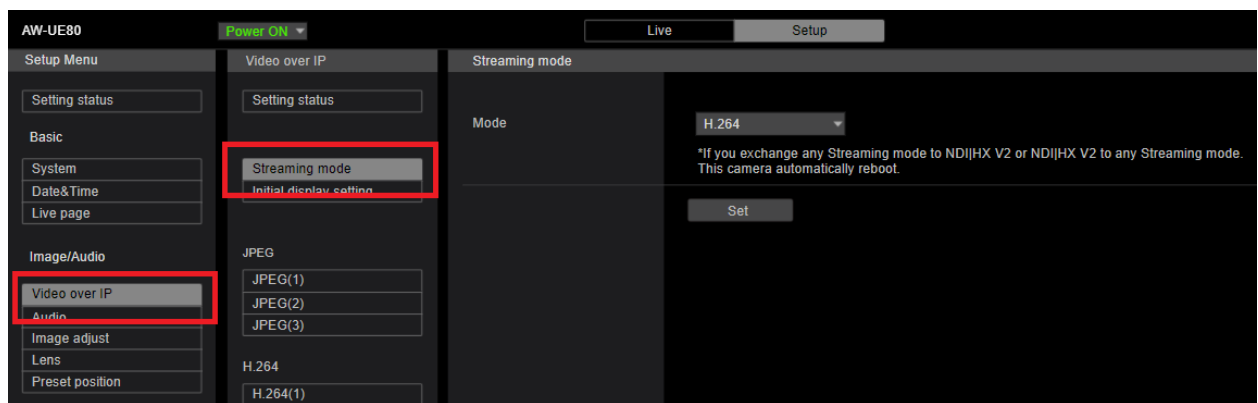
- With this, the setting is complete.

Settings of AW-UE80, AW-UE50, AW-UE40

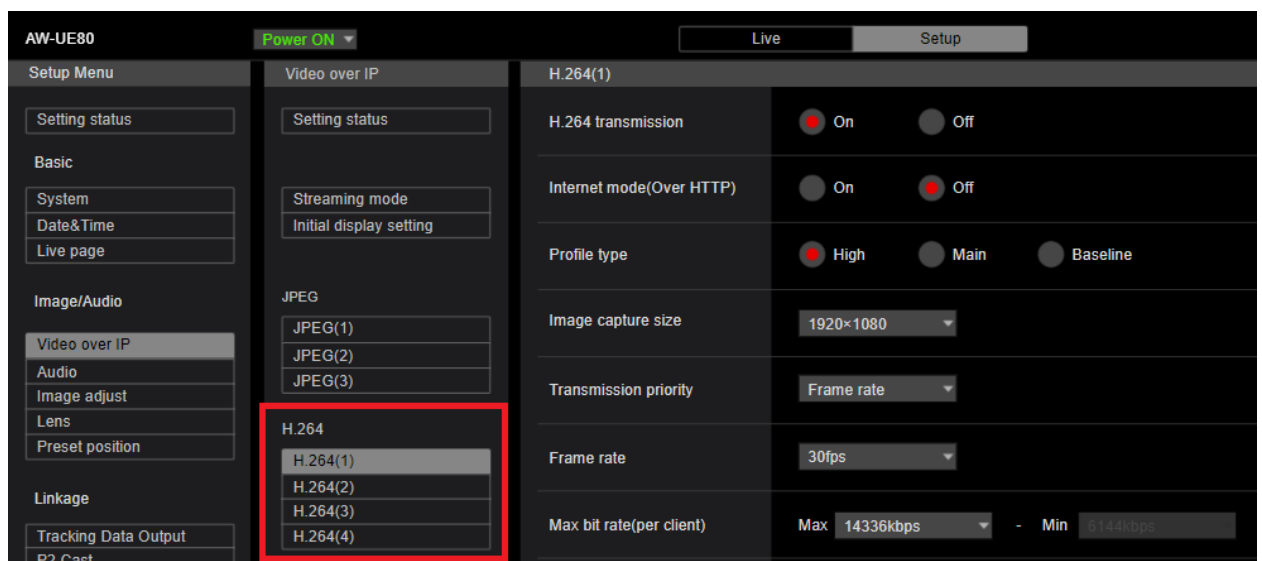
1. Start web browser.
2. In the URL field of web browser, enter the IP address of the Network Camera.
3. The Web screen of the Network Camera will open. Click the Setup button located on top center.



4. Camera's account and password confirmation screen will appear. Enter your account name and password.
5. Click the [Video over IP] button on the left side of the Setup screen and click the [Streaming mode] button in the [Video over IP] menu. The Streaming mode setting screen is displayed. Set "H.264". After setting the parameters, click the Set button and save the settings.



6. Set the operation of H.264 (1) through H.264 (4) in the [Video over IP] menu. After setting the parameters, click the Set button and save the settings.



H.264 transmission: Turns on the stream you want to use.

Image capture size: Sets the resolution within the range that satisfies the conditions described in "H.264 setting conditions" in this section.

Transmission priority: Set it to "Frame rate".

Frame rate: Sets the frame rate within the range that satisfies the conditions described in “H.264 setting conditions” in this section.

7. With this, the setting is complete.

Setting of AW-UE70/AW-UN70

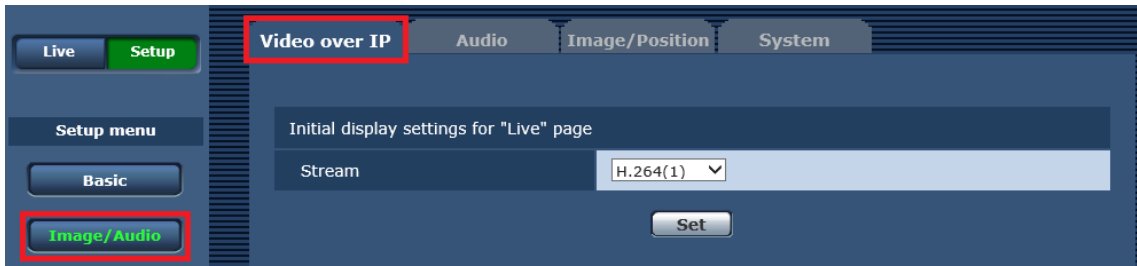
1. Start web browser.
2. In the URL field of web browser, enter the IP address of the Network Camera.
3. The Web screen of the Network Camera will open. Click the Setup button located on top left.



4. Camera's account and password confirmation screen will appear. Enter your account name and password.
5. Click the [Basic] button on the left side of the Setup screen and select the [Priority mode] tab located at the top of the screen that appears.



6. Set the Priority Mode setting to either of the following. After setting the parameters, click the Set button and save the settings.
 - IP
 - IP (4K)
 - NDI|HX *AW-UN70 only
7. Click the [Image/Audio] button on the left side of the Setup screen and select the [Video over IP] tab located at the top of the screen that appears.



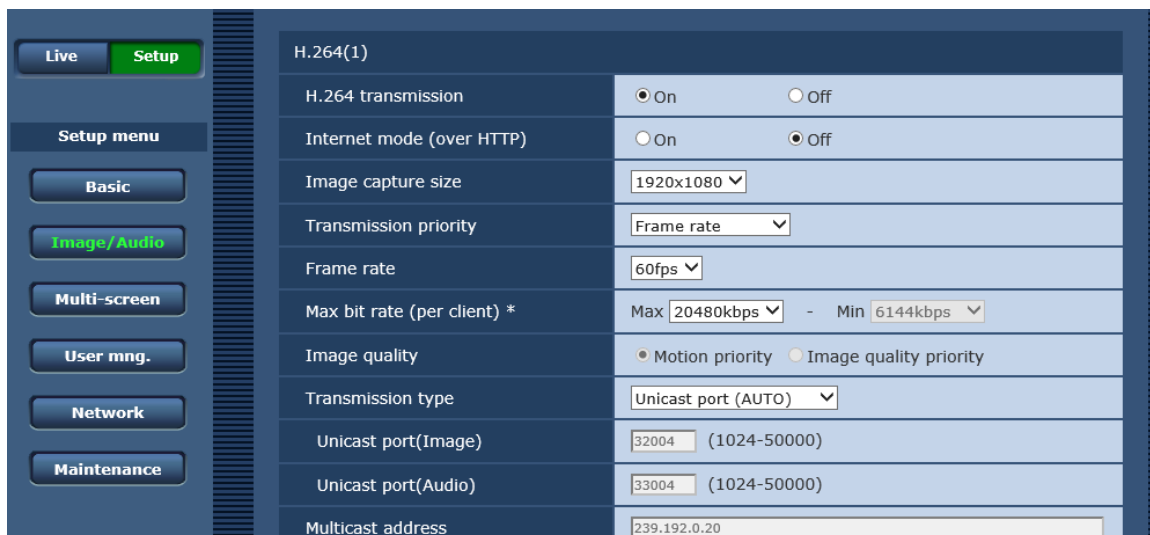
- Set the operation of H.264 (1) through H.264 (4) in the [Video over IP] tab. When using this software, it is necessary to make settings so that the following parameters satisfy the conditions described here. After setting the parameters, click the Set button and save the settings.

H.264 transmission: Turns on the stream you want to use.

Image capture size: Sets the resolution within the range that satisfies the conditions described in “H.264 setting conditions” in this section.

Transmission priority: Set it to “Frame rate”.

Frame rate: Sets the frame rate within the range that satisfies the conditions described in “H.264 setting conditions” in this section.



- With this, the setting is complete.

Setting of AW-HE40/70/65, AW-HN40/70/65, AW-HE42/75/68

Setting parameters are same as AW-UE70/AW-UN70.

Refer to “Setting of AW-UE70/AW-UN70” and make the settings.

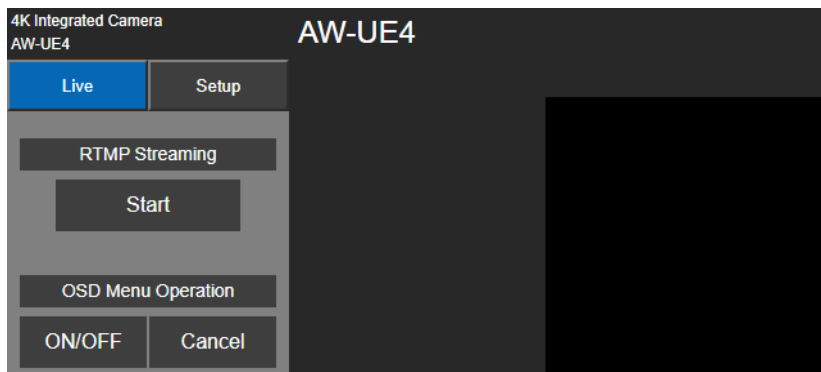
<Notes>

- IP (4K) will not appear in Priority Mode setting.

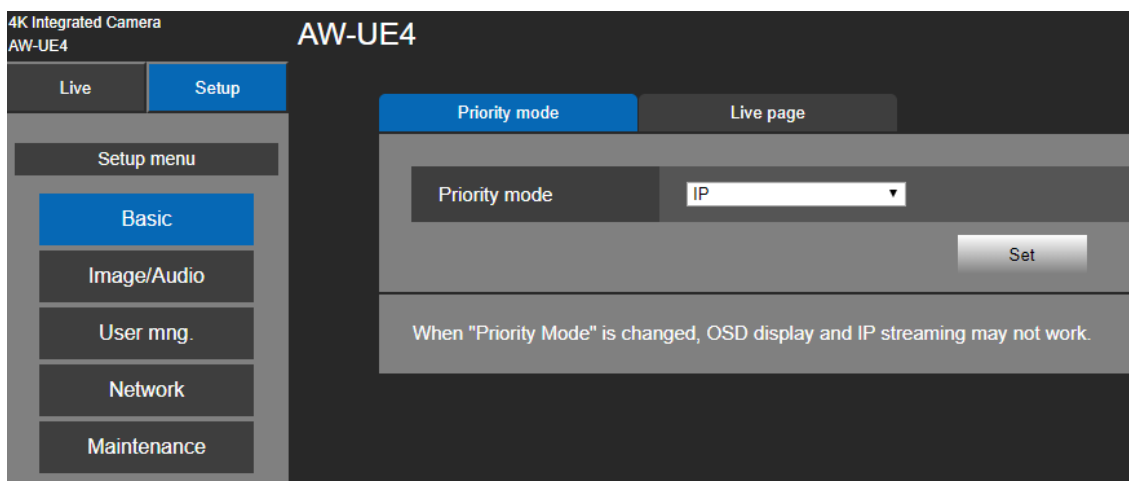
Set the Priority Mode setting to “IP” or “NDI | HX”. “NDI | HX” will appear only in the case of AW-HN40/70/65.

Setting of AW-UE20, AW-HE20, AW-UE4

1. Start web browser.
2. In the URL field of web browser, enter the IP address of the Network Camera.
3. The Web screen of the Network Camera will open. Click the Setup button located on top left.



4. Camera's account and password confirmation screen will appear. Enter your account name and password.
5. Click the [Basic] button on the left side of the Setup screen and select the [Priority mode] tab located at the top of the screen that appears.



6. Set the Priority Mode setting to either of the following. After setting the parameters, click the Set button and save the settings.
 - IP
 - IP (4K)
7. Click the [Image/Audio] button on the left side of the Setup screen and select the [Video over IP] tab located at the top of the screen that appears.
8. Set the operation of H.264/H.265 in the [Video over IP] tab. When using this software, it is necessary to make settings so that the following parameters satisfy the conditions described here. After setting the parameters, click the Set button and save the settings.

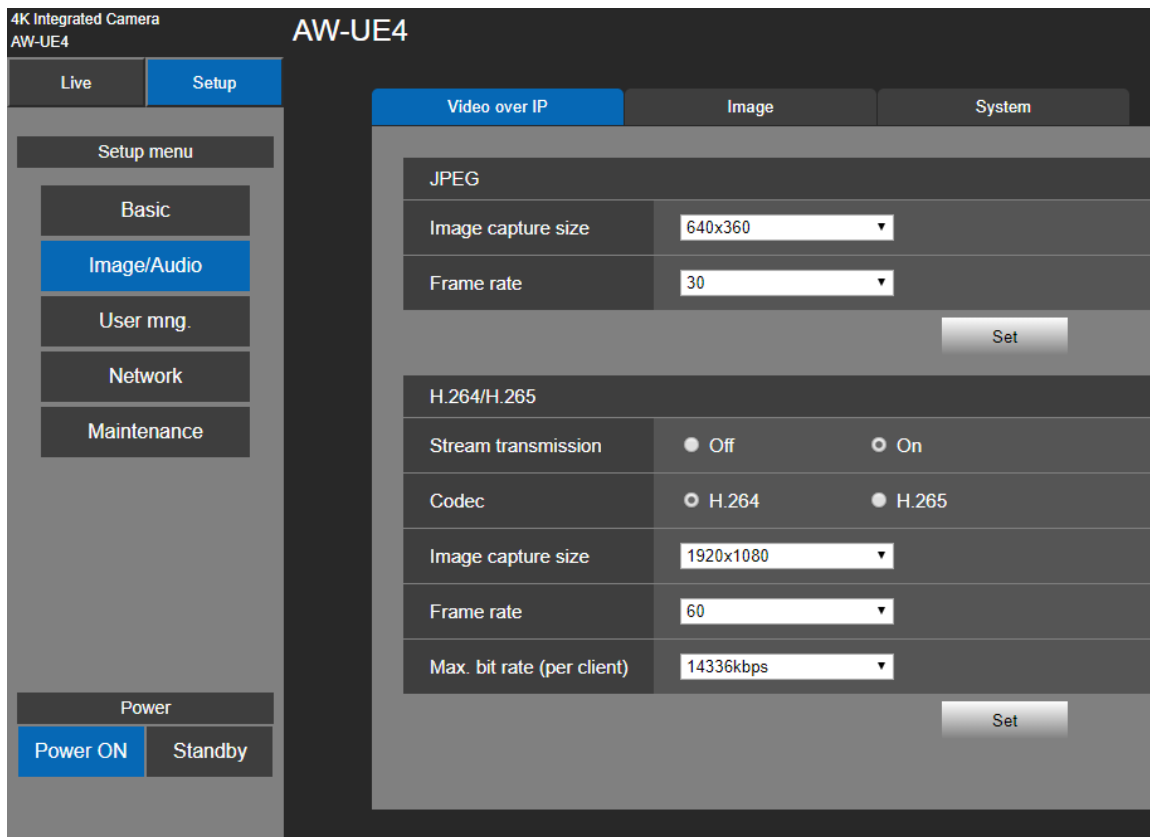
Stream transmission: Set it to "On".

Codec: Set it to "H.264".

Image capture size: Sets the resolution within the range that satisfies the conditions described in "H.264 setting conditions" in this section.

Frame rate:

Sets the frame rate within the range that satisfies the conditions described in “H.264 setting conditions” in this section.



9. With this, the setting is complete.

Settings of AG-UMR20/AG-UCK20, AG-MDR25/AG-MDC20

Setting parameters are same as AW-UE70/AW-UN70.

Refer to “Setting of AW-UE70/AW-UN70” and make the settings.

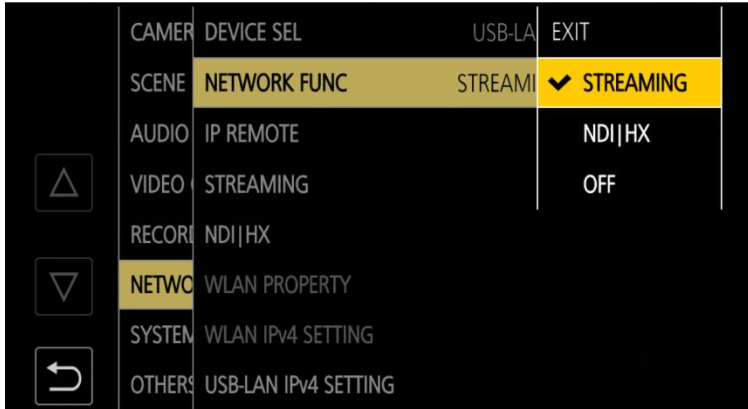
<Notes>

- “NDI|HX” will not appear in Priority Mode setting.

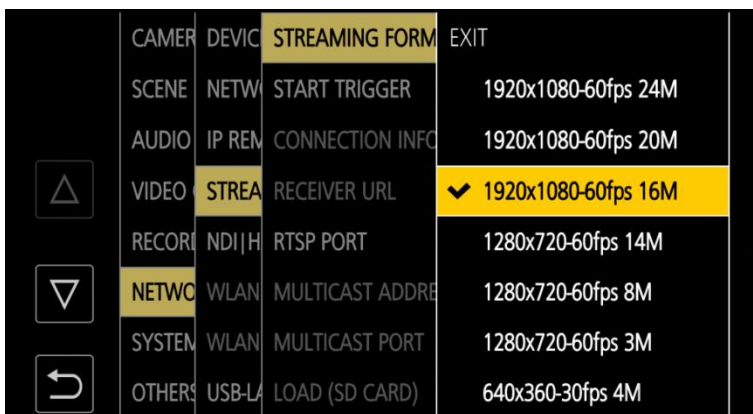
Set the Priority Mode setting to “IP” or ”IP (4K)”.

Settings of CX Camera Recorder

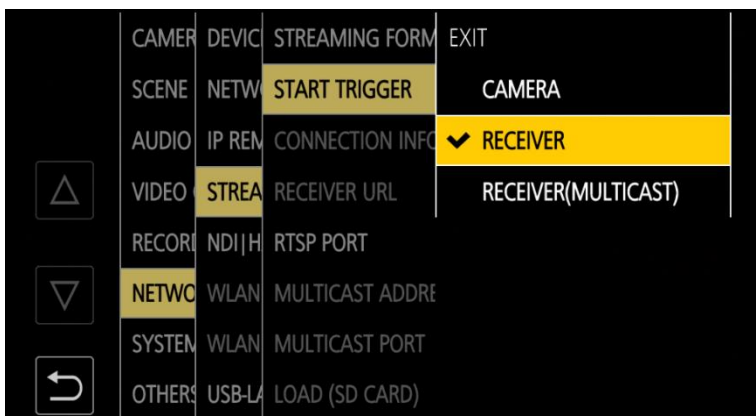
1. Open the “NETWORK -> NETWORK FUNC” menu on the camera and set it to “STREAMING”.



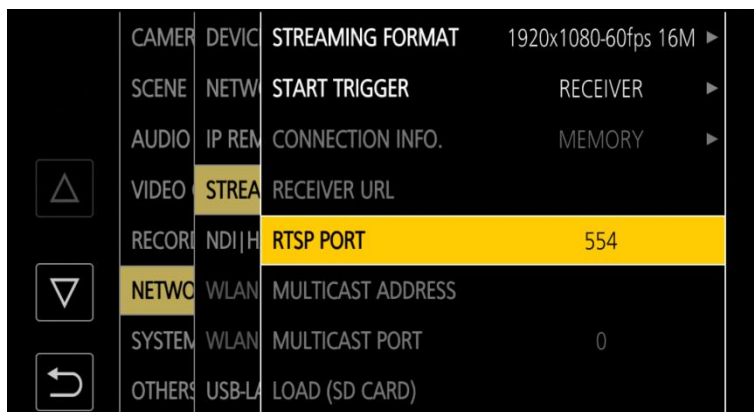
2. Open the “NETWORK -> STREAMING -> STREAMING FORMAT” menu. And set the resolution within the range that satisfies the conditions described in “H.264 setting conditions(CX Camera Recorder)” in this section.



3. Open the “NETWORK -> STREAMING -> START TRIGGER” menu and set it to “RECEIVER”.



- (CX10 series only) Open the “NETWORK -> STREAMING -> RTSP PORT” menu and set value to 554.



- With this, the setting is complete.

Description of functions

Starting and closing the software

Starting the software

The software will automatically start after you login to Windows.

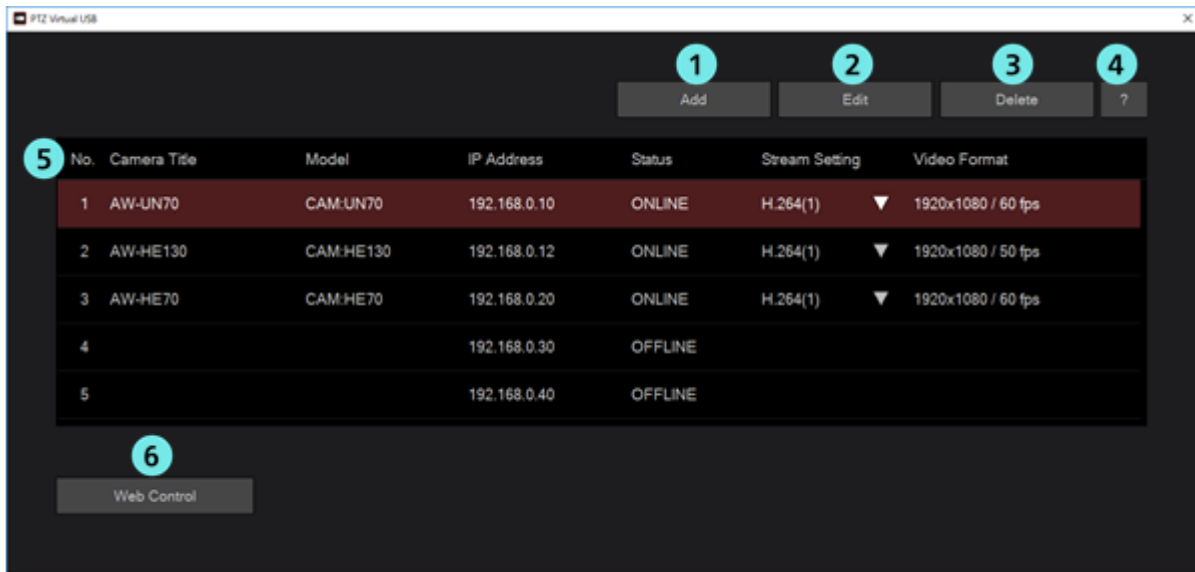
Closing the software

To close this software, click the X button at the top right of the window.

A confirmation screen for closing the software will be displayed. Select "Yes" to close this software.

Description of the Main screen

This section explains each element of the Main screen of this software.



① Register Camera button

You can newly register a Network Camera and add it to the list.

② Edit Camera button

You can edit the settings of the Network Camera selected from the list.

③ Delete Camera button

You can delete the Network Camera selected from the list.

④ Help button

It will show the help file (this document) of the software.

⑤ Camera list

It will show the list of Network Cameras that are registered.

The following details will appear in each column.

No.: Control number of the camera.

Camera Title: Title set on the Web screen of the camera. And this will be “CX Camera Series” with the CX Camera Recorder.

Model: Type and model number of the camera.

IP Address: IP address of the camera.

Status: Status of the camera. For the details of each state, please refer to “Status display of camera” given below.

Stream Setting: Number of the selected H.264 stream.

By clicking the ▼ button, you can select H.264 stream to be used.

Video Format: Resolution and frame rate of the selected H.264 stream.

⑥ Display camera web screen button

Displays the web screen of the Network Camera selected from the list in the web browser.
On the Web screen displayed from this button, some functions such as file download may not operate normally.

Status display of camera

This section explains about the status display of camera that appears in the Main screen.
List of status that appears and respective state are as follows:

- **ONLINE**

Network Camera is recognized, and video and audio can be received normally.

- **OFFLINE**

Network Camera is not recognized. Either of the following could be the root cause.

- Power supply of the Network Camera is switched off, or it is in the standby mode
- PC and the Network Camera are not connected with the network cable

Check that the power supply of the Network Camera is ON, and PC and the Network Camera are correctly connected with the network cable.

- **UNSUPPORT**

Although the Network Camera is recognized, settings of the Network Camera are not supported by the software. Therefore, it cannot be used.

Set H.264 stream according to the procedure of “Initial settings of the camera” given in this document.

- **DISCONNECTED**

Connection of the Network Camera is disconnected.

Check that the network connection between the PC and the Network Camera is correctly done.

- **AUTH FAIL**

User authentication of the network camera is failed.

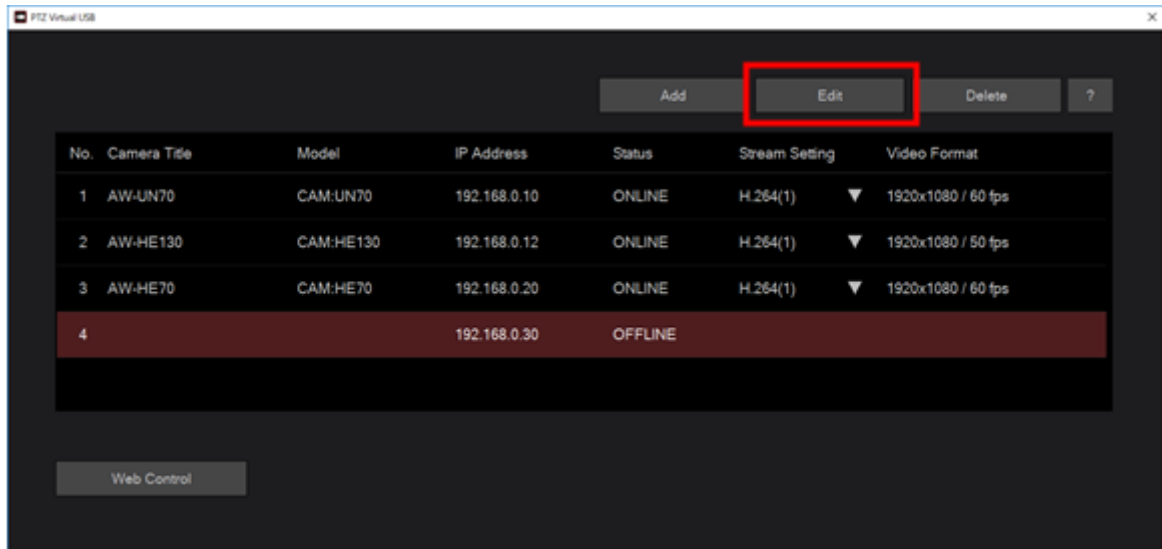
Check that the account and password you entered when registering the camera are correct.

Changing network settings(only for PTZ camera, POVCAM)

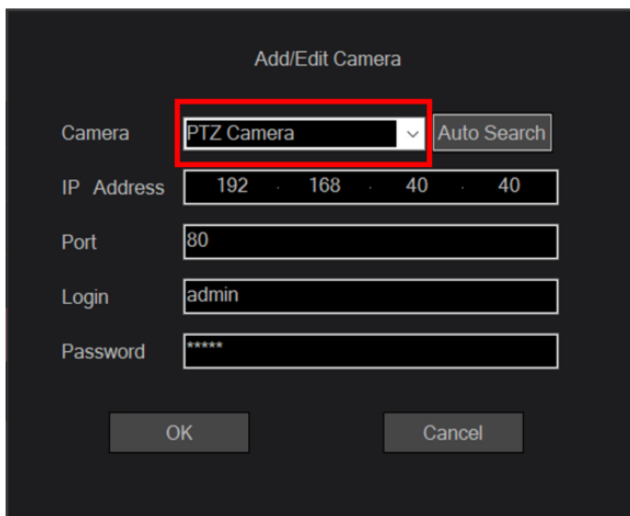
You can change the network settings of the Network Camera from this software.

Make settings as per the following steps.

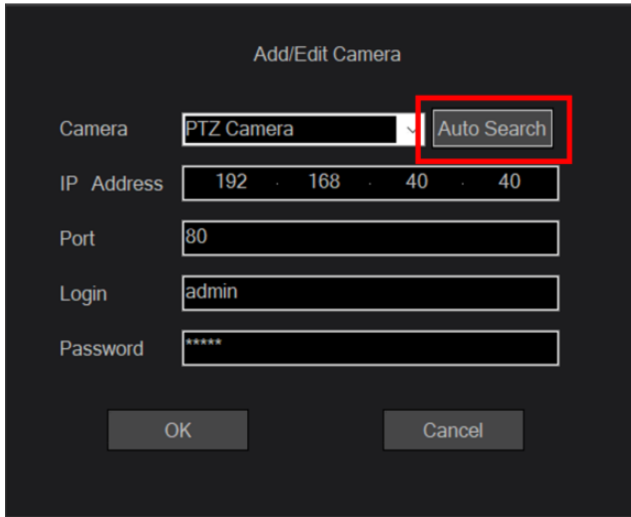
1. Click the Edit button in the Main screen.



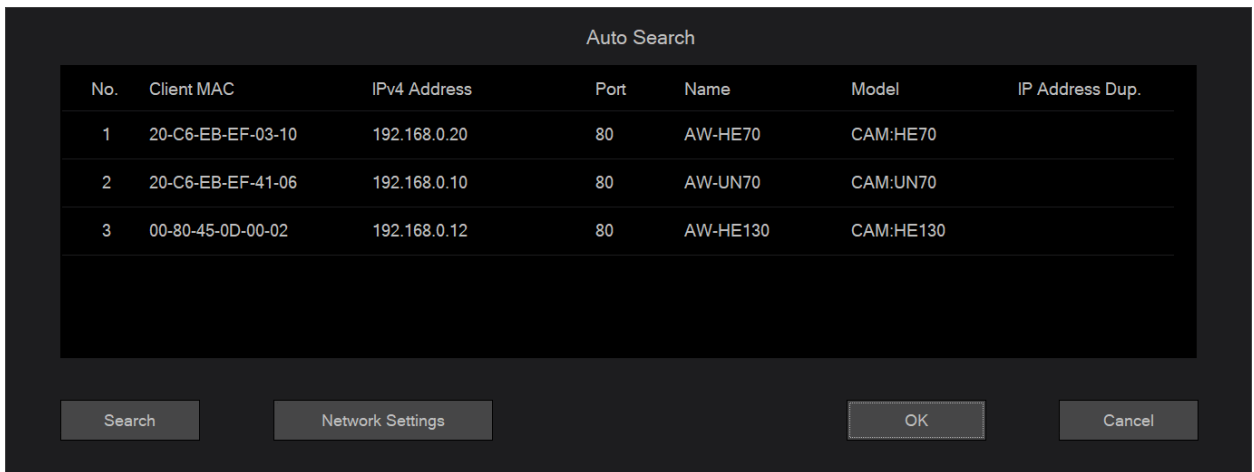
2. Select "PTZ Camera" on the Camera section on the Add/Edit Camera screen that appeared.



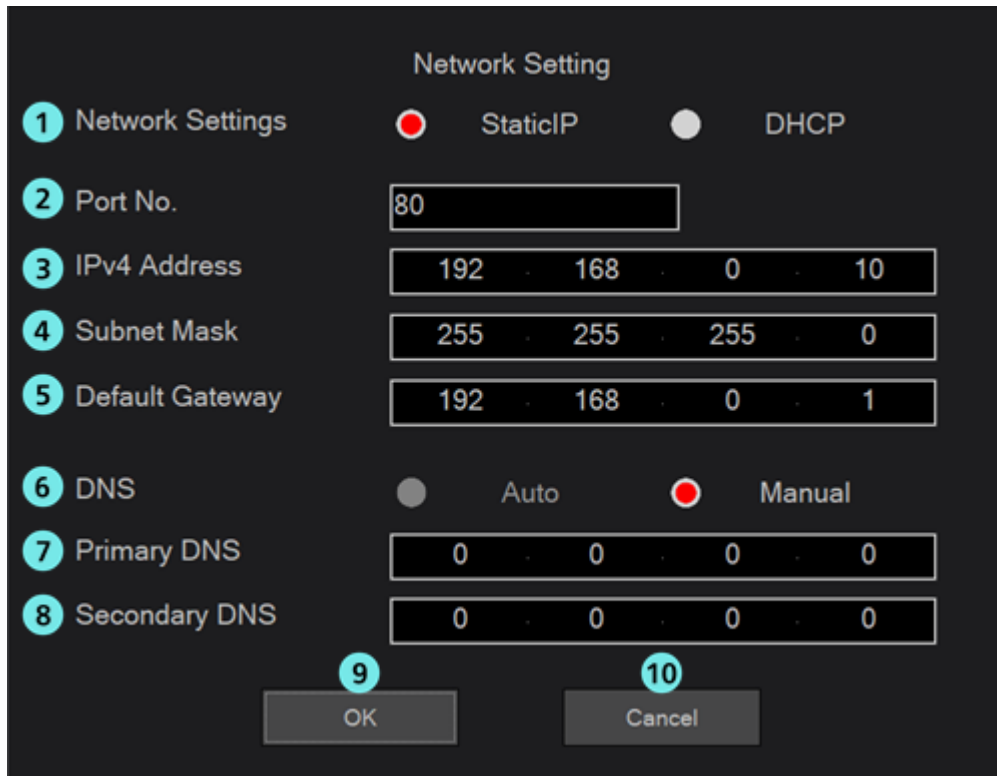
3. Click the "Auto Search" button on the Add/Edit Camera screen that appeared.



4. The Auto Search screen will appear, and the Network Cameras present on the network will appear in the list.



5. From the list of Network Cameras, select the camera whose settings you want to change, and then click the Network Setting button.
6. The Network Settings screen will open. Changing the respective parameter and clicking the OK button will change the network settings of the camera.



① Network Settings

Select the setting method of IP address.

Static IP: Setting will be done with static IP.

DHCP: Setting will be done with DHCP.

② Port No.

It sets the port number to be used by the camera.

③ IPv4 Address

It sets the IP address of the camera.

It can be only set when Static IP is selected in Network Settings.

④ Subnet Mask

It sets the subnet mask of the camera.

It can be only set when Static IP is selected in Network Settings.

⑤ Default Gateway

It sets the gateway of the camera.

It can be only set when Static IP is selected in Network Settings.

⑥ DNS

Select the setting method of DNS server.

Auto: It automatically sets the DNS server.

Manual: You can directly specify the address of the DNS server.

⑦ Primary DNS

It sets the address of primary DNS.

It can be only set when Manual is selected in DNS.

⑧ Secondary DNS

It sets the address of secondary DNS.

It can be only set when Manual is selected in DNS.

⑨ OK button

It enables the settings and closes the screen.

⑩ Cancel button

It cancels the settings and closes the screen.

<Notes>

- For simultaneously using the EasyIpSetup software and this software, you cannot make network settings from this software.

Flow until using the virtual USB camera

This section explains the flow from registering the Network Camera / Camera Recorder with this software until using it as a virtual USB camera in the Windows applications.

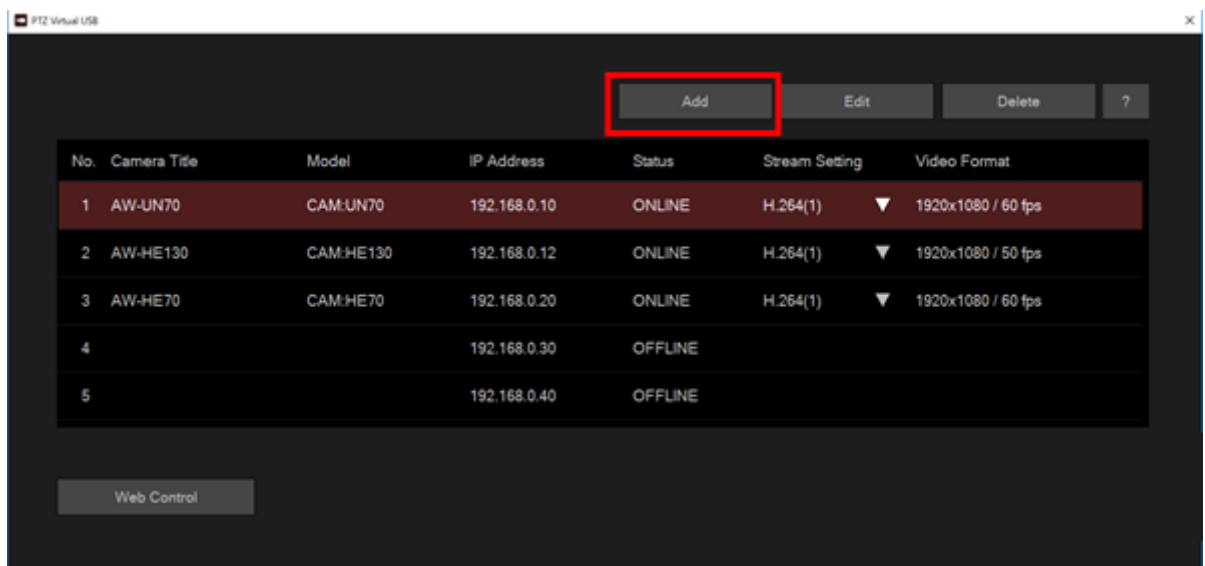
The broad flow is given below:

1. Register the Network Camera
2. Set the H.264 stream to be used
3. Use the virtual USB camera device in Windows application

1. Register the Network Camera

When using this software for the first time, register the Network Camera as per the following steps.

1. Click the Add button on the Main screen of the software.



2. The Add/Edit Camera screen will appear. Enter the information of each parameter.



Camera: Select camera type

PTZ Camera: in the case of PTZ camera or POVCAM.

CX Camera Serie: in the case of CX Camera Recorder.

IP Address: IP address of the Network Camera

Port: Port number of the Network Camera(Only for PTZ camera or POVCAM)

Login: Account of the Network Camera(Only for PTZ camera or POVCAM)

Password: Password of the Network Camera(Only for PTZ camera or POVCAM)

Resolution: Image resolution which set on the camera(Only for CX Camera)

As for the input method, you can manually enter the parameters or you can search the Network Camera and automatically enter the parameters.

- When manually entering

Move to the box of each parameter, and enter a value.

- When automatically entering

Clicking the Auto Search button will show the list of the Network Cameras present on the network. Selecting any one camera from the list and closing the window with the OK button will automatically populate some of the parameters.

3. Click the OK button and close the Add/Edit Camera screen.
4. A new network camera will be added to the camera list on the Main screen.

<Notes>

When adding a network camera, installation confirmation screen of "Panasonic AV Stream Camera" device and "Panasonic Virtual Microphone" device may be displayed. In that case please allow installation.

5. Few seconds after the Network Camera is added, the Status display on the Main screen will change according to the state of the camera.

When the Network Camera is recognized and when it can be used in the software program, the Status display will become "ONLINE". Therefore, check that the Status display becomes "ONLINE". When the Status display is not "ONLINE", refer to "Status display of camera" in this manual and check the network connection and the settings of the Network

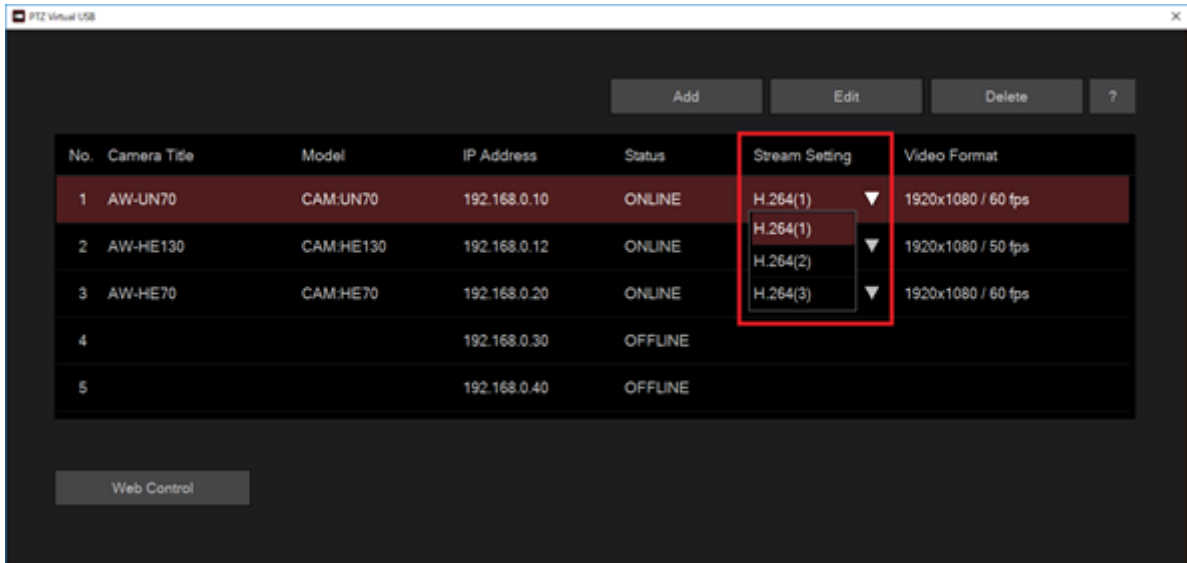
Camera.

6. Repeat steps 1 through 5 above for the number of Network Cameras that are used.

2. Set the H.264 stream to be used

Network Cameras who status is “ONLINE” can receive the H.264 stream in this software. Network Cameras can normally distribute multiple H.264 streams. Therefore, if required, with the following procedure, set the H.264 stream to be used by this software.

1. From the camera list on the Main screen, select the Network Camera to be set.
2. Click the ▾ part in the Stream Setting column will show a list of H.264 streams that can be set. Then, select the H.264 stream to be used.



3. If the settings are reflected, the display in the Video Format column will change.

<Notes>

- FPS information is not showed in the case of CX camera Recorder.

3. Use the virtual USB camera device

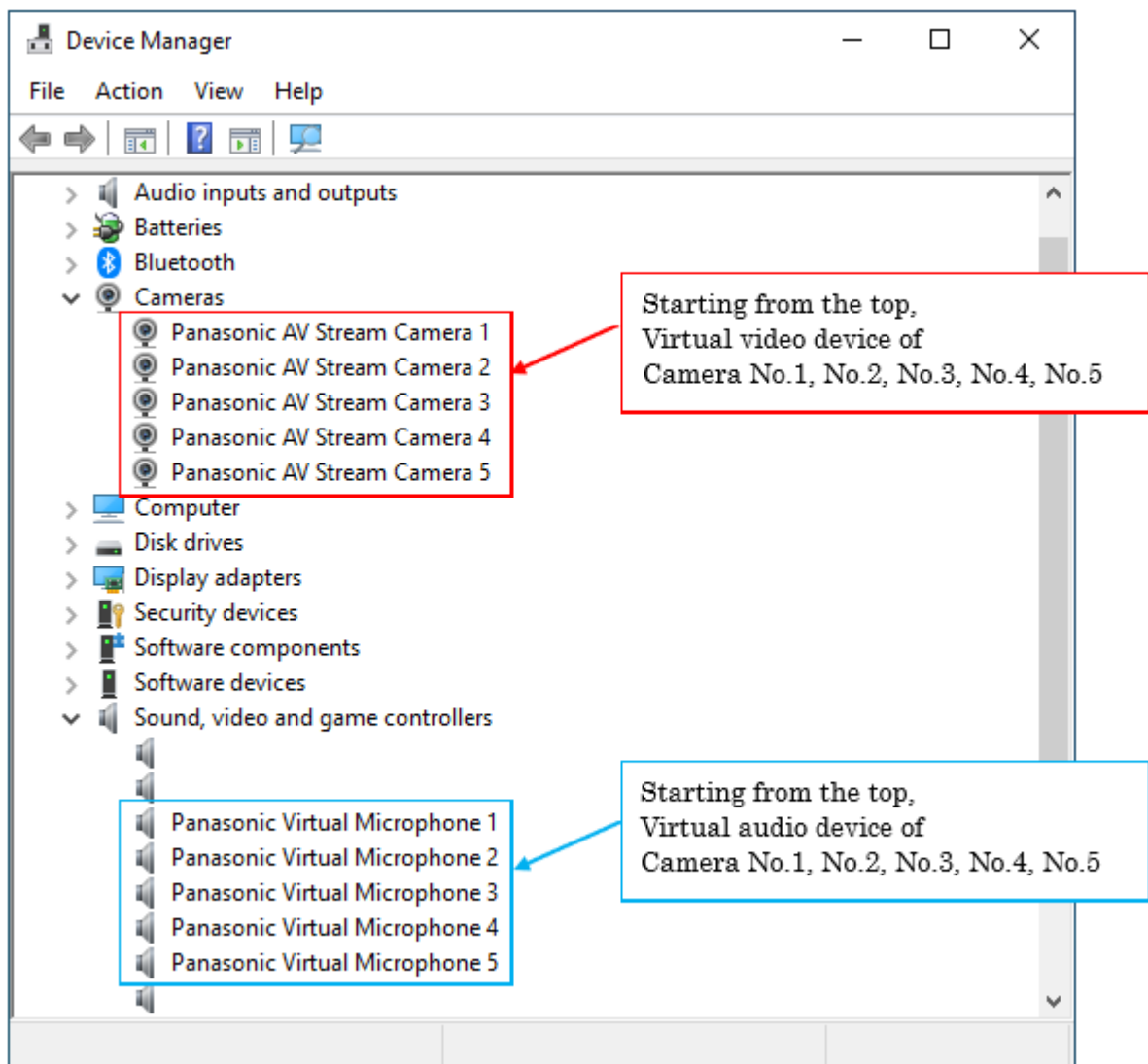
Registering a Network Camera in this software will create a virtual USB camera device on Windows corresponding to the registered Network Camera. Virtual USB camera device is made of the virtual video device meant for fetching video and the virtual audio device meant for fetching audio.

Name of the virtual USB camera device created will be as follows. In *, a numerical value corresponding to the Camera No. in the camera list on the Main screen will be entered.

Virtual video device: Panasonic AV Stream Camera *

Virtual audio device: Panasonic Virtual Microphone *

If the virtual USB device was created correctly, you will see the virtual Video device under "Cameras" and the virtual Audio device under "Sound, video and game controllers" in Device Manager. The following is an example of how Device Manager will appear when five Network Cameras are registered.



For using the video of the Network Camera in the Windows application corresponding to the USB camera, selecting Panasonic AV Stream Camera * in video device settings of the Windows application will output the video of Network Camera in the Windows application, which can be used in the Windows application.

Similarly, for using the audio of the Network Camera in the Windows application corresponding to the USB camera, selecting Panasonic Virtual Microphone * in audio device settings of the Windows application will output the audio of Network Camera in the Windows application, which can be used in the Windows application.

<Notes>

- It may take about a few seconds until the video actually appears after selecting Panasonic AV Stream Camera * in video device settings.
- When multiple virtual USB devices are used simultaneously, symptoms such as frame dropping of video may occur depending on the performance of the PC. When such symptoms have occurred, reduce the number of virtual USB devices that simultaneously used.
- When changing the H.264 stream setting on the network camera, it takes about 5 seconds for the setting to be reflected in this software. After changing the H.264 stream setting, please allow at least 5 seconds before using the network camera with the Windows application.

Appendix

Troubleshooting

This section explains the root cause of symptoms that occur when the software is running and how to address these symptoms.

I registered a Network Camera, but its Status is OFFLINE.

Cause 1:

- Connection between the PC and the Network Camera is not correct.

Solution 1:

- Check that the PC and the Network Camera are connected correctly with the network cable.

Cause 2:

- Power supply of the Network Camera is switched off, or it is in the standby mode

Solution 2:

- Check that the power supply of the Network Camera is turned on.

I registered a Network Camera, but its Status is UNSUPPORT.

Cause1:

- H.264 stream setting of the Network Camera is not supported by the software.

Solution1:

- Refer to “Initial settings of the camera” in this manual and set H.264 stream of the Network Camera.
- In Stream Setting on the Main screen, select another H.264 stream except the H.264 stream that is selected at present.

Cause 2:

- The account or password entered when registering the network camera is incorrect.

Solution 2:

- Check that the account or password is correct.

When displaying the video of the Network Camera in the Windows application, symptoms such as frame dropping and image distorting occurs.

Cause:

- Decoding process of the video is not completing on time because of inadequate CPU performance of the PC, etc.

Solution:

- Check the behavior of the software after changing the PC to another PC having high performance CPU.
- If you are using multiple virtual USB devices simultaneously, reduce the number of virtual USB devices used simultaneously.
- Reduce the resolution / frame rate / bit rate of the H.264 stream of the network camera.

I was trying to output the audio of Network Camera in the Windows application; however, I didn't get any audio.

Cause:

- Audio output setting of the Network Camera is not enabled.

Solution:

- Check that the audio output setting is enabled on the Web screen of the Network Camera. For details, refer to the instructions manual of the respective Network Camera.

Image from CX Camera Rrcorder is "Error".

Cause:

- Image resolution on the camera side and on this application is not match.

Solution:

- Check the resolution settings on both side and match them for the same value.

Uninstallation Procedure

1. Select "Program and functions" in the Control Panel of Windows.
2. Selecting "Panasonic PTZVirtualUsbDriver" from the list of programs and clicking "Uninstall" will show the confirmation screen.
3. Clicking "Yes" on the confirmation screen will uninstall the software.

Software Information Relating to This Product

This product includes the following open source software.

FFmpeg Ver. 4.1.3

- License information

GNU LESSER GENERAL PUBLIC LICENSE

Version 2.1, February 1999

Copyright (C) 1991, 1999 Free Software Foundation, Inc.

51 Franklin Street, Fifth Floor, Boston, MA 02110-1301 USA

Everyone is permitted to copy and distribute verbatim copies of this license document, but changing it is not allowed.

[This is the first released version of the Lesser GPL. It also counts as the successor of the GNU Library Public License, version 2, hence the version number 2.1.]

Preamble

The licenses for most software are designed to take away your freedom to share and change it. By contrast, the GNU General Public Licenses are intended to guarantee your freedom to share and change free software--to make sure the software is free for all its users.

This license, the Lesser General Public License, applies to some specially designated software packages--typically libraries--of the Free Software Foundation and other authors who decide to use it. You can use it too, but we suggest you first think carefully about whether this license or the ordinary General Public License is the better strategy to use in any particular case, based on the explanations below.

When we speak of free software, we are referring to freedom of use, not price. Our General Public Licenses are designed to make sure that you have the freedom to distribute copies of free software (and charge

for this service if you wish); that you receive source code or can get it if you want it; that you can change the software and use pieces of it in new free programs; and that you are informed that you can do these things.

To protect your rights, we need to make restrictions that forbid distributors to deny you these rights or to ask you to surrender these rights. These restrictions translate to certain responsibilities for you if you distribute copies of the library or if you modify it.

For example, if you distribute copies of the library, whether gratis or for a fee, you must give the recipients all the rights that we gave you. You must make sure that they, too, receive or can get the source code. If you link other code with the library, you must provide complete object files to the recipients, so that they can relink them with the library after making changes to the library and recompiling it. And you must show them these terms so they know their rights.

We protect your rights with a two-step method: (1) we copyright the library, and (2) we offer you this license, which gives you legal permission to copy, distribute and/or modify the library.

To protect each distributor, we want to make it very clear that there is no warranty for the free library. Also, if the library is modified by someone else and passed on, the recipients should know that what they have is not the original version, so that the original author's reputation will not be affected by problems that might be introduced by others.

Finally, software patents pose a constant threat to the existence of any free program. We wish to make sure that a company cannot effectively restrict the users of a free program by obtaining a restrictive license from a patent holder. Therefore, we insist that any patent license obtained for a version of the library must be consistent with the full freedom of use specified in this license.

Most GNU software, including some libraries, is covered by the ordinary GNU General Public License. This license, the GNU Lesser

General Public License, applies to certain designated libraries, and is quite different from the ordinary General Public License. We use this license for certain libraries in order to permit linking those libraries into non-free programs.

When a program is linked with a library, whether statically or using a shared library, the combination of the two is legally speaking a combined work, a derivative of the original library. The ordinary General Public License therefore permits such linking only if the entire combination fits its criteria of freedom. The Lesser General Public License permits more lax criteria for linking other code with the library.

We call this license the "Lesser" General Public License because it does Less to protect the user's freedom than the ordinary General Public License. It also provides other free software developers Less of an advantage over competing non-free programs. These disadvantages are the reason we use the ordinary General Public License for many libraries. However, the Lesser license provides advantages in certain special circumstances.

For example, on rare occasions, there may be a special need to encourage the widest possible use of a certain library, so that it becomes a de-facto standard. To achieve this, non-free programs must be allowed to use the library. A more frequent case is that a free library does the same job as widely used non-free libraries. In this case, there is little to gain by limiting the free library to free software only, so we use the Lesser General Public License.

In other cases, permission to use a particular library in non-free programs enables a greater number of people to use a large body of free software. For example, permission to use the GNU C Library in non-free programs enables many more people to use the whole GNU operating system, as well as its variant, the GNU/Linux operating system.

Although the Lesser General Public License is Less protective of the users' freedom, it does ensure that the user of a program that is

linked with the Library has the freedom and the wherewithal to run that program using a modified version of the Library.

The precise terms and conditions for copying, distribution and modification follow. Pay close attention to the difference between a "work based on the library" and a "work that uses the library". The former contains code derived from the library, whereas the latter must be combined with the library in order to run.

GNU LESSER GENERAL PUBLIC LICENSE TERMS AND CONDITIONS FOR COPYING, DISTRIBUTION AND MODIFICATION

0. This License Agreement applies to any software library or other program which contains a notice placed by the copyright holder or other authorized party saying it may be distributed under the terms of this Lesser General Public License (also called "this License"). Each licensee is addressed as "you".

A "library" means a collection of software functions and/or data prepared so as to be conveniently linked with application programs (which use some of those functions and data) to form executables.

The "Library", below, refers to any such software library or work which has been distributed under these terms. A "work based on the Library" means either the Library or any derivative work under copyright law: that is to say, a work containing the Library or a portion of it, either verbatim or with modifications and/or translated straightforwardly into another language. (Hereinafter, translation is included without limitation in the term "modification".)

"Source code" for a work means the preferred form of the work for making modifications to it. For a library, complete source code means all the source code for all modules it contains, plus any associated interface definition files, plus the scripts used to control compilation and installation of the library.

Activities other than copying, distribution and modification are not

covered by this License; they are outside its scope. The act of running a program using the Library is not restricted, and output from such a program is covered only if its contents constitute a work based on the Library (independent of the use of the Library in a tool for writing it). Whether that is true depends on what the Library does and what the program that uses the Library does.

1. You may copy and distribute verbatim copies of the Library's complete source code as you receive it, in any medium, provided that you conspicuously and appropriately publish on each copy an appropriate copyright notice and disclaimer of warranty; keep intact all the notices that refer to this License and to the absence of any warranty; and distribute a copy of this License along with the Library.

You may charge a fee for the physical act of transferring a copy, and you may at your option offer warranty protection in exchange for a fee.

2. You may modify your copy or copies of the Library or any portion of it, thus forming a work based on the Library, and copy and distribute such modifications or work under the terms of Section 1 above, provided that you also meet all of these conditions:

- a) The modified work must itself be a software library.
- b) You must cause the files modified to carry prominent notices stating that you changed the files and the date of any change.
- c) You must cause the whole of the work to be licensed at no charge to all third parties under the terms of this License.
- d) If a facility in the modified Library refers to a function or a table of data to be supplied by an application program that uses the facility, other than as an argument passed when the facility is invoked, then you must make a good faith effort to ensure that, in the event an application does not supply such function or table, the facility still operates, and performs whatever part of

its purpose remains meaningful.

(For example, a function in a library to compute square roots has a purpose that is entirely well-defined independent of the application. Therefore, Subsection 2d requires that any application-supplied function or table used by this function must be optional: if the application does not supply it, the square root function must still compute square roots.)

These requirements apply to the modified work as a whole. If identifiable sections of that work are not derived from the Library, and can be reasonably considered independent and separate works in themselves, then this License, and its terms, do not apply to those sections when you distribute them as separate works. But when you distribute the same sections as part of a whole which is a work based on the Library, the distribution of the whole must be on the terms of this License, whose permissions for other licensees extend to the entire whole, and thus to each and every part regardless of who wrote it.

Thus, it is not the intent of this section to claim rights or contest your rights to work written entirely by you; rather, the intent is to exercise the right to control the distribution of derivative or collective works based on the Library.

In addition, mere aggregation of another work not based on the Library with the Library (or with a work based on the Library) on a volume of a storage or distribution medium does not bring the other work under the scope of this License.

3. You may opt to apply the terms of the ordinary GNU General Public License instead of this License to a given copy of the Library. To do this, you must alter all the notices that refer to this License, so that they refer to the ordinary GNU General Public License, version 2, instead of to this License. (If a newer version than version 2 of the ordinary GNU General Public License has appeared, then you can specify that version instead if you wish.) Do not make any other change in these notices.

Once this change is made in a given copy, it is irreversible for that copy, so the ordinary GNU General Public License applies to all subsequent copies and derivative works made from that copy.

This option is useful when you wish to copy part of the code of the Library into a program that is not a library.

4. You may copy and distribute the Library (or a portion or derivative of it, under Section 2) in object code or executable form under the terms of Sections 1 and 2 above provided that you accompany it with the complete corresponding machine-readable source code, which must be distributed under the terms of Sections 1 and 2 above on a medium customarily used for software interchange.

If distribution of object code is made by offering access to copy from a designated place, then offering equivalent access to copy the source code from the same place satisfies the requirement to distribute the source code, even though third parties are not compelled to copy the source along with the object code.

5. A program that contains no derivative of any portion of the Library, but is designed to work with the Library by being compiled or linked with it, is called a "work that uses the Library". Such a work, in isolation, is not a derivative work of the Library, and therefore falls outside the scope of this License.

However, linking a "work that uses the Library" with the Library creates an executable that is a derivative of the Library (because it contains portions of the Library), rather than a "work that uses the library". The executable is therefore covered by this License. Section 6 states terms for distribution of such executables.

When a "work that uses the Library" uses material from a header file that is part of the Library, the object code for the work may be a derivative work of the Library even though the source code is not. Whether this is true is especially significant if the work can be linked without the Library, or if the work is itself a library. The

threshold for this to be true is not precisely defined by law.

If such an object file uses only numerical parameters, data structure layouts and accessors, and small macros and small inline functions (ten lines or less in length), then the use of the object file is unrestricted, regardless of whether it is legally a derivative work. (Executables containing this object code plus portions of the Library will still fall under Section 6.)

Otherwise, if the work is a derivative of the Library, you may distribute the object code for the work under the terms of Section 6. Any executables containing that work also fall under Section 6, whether or not they are linked directly with the Library itself.

6. As an exception to the Sections above, you may also combine or link a "work that uses the Library" with the Library to produce a work containing portions of the Library, and distribute that work under terms of your choice, provided that the terms permit modification of the work for the customer's own use and reverse engineering for debugging such modifications.

You must give prominent notice with each copy of the work that the Library is used in it and that the Library and its use are covered by this License. You must supply a copy of this License. If the work during execution displays copyright notices, you must include the copyright notice for the Library among them, as well as a reference directing the user to the copy of this License. Also, you must do one of these things:

a) Accompany the work with the complete corresponding machine-readable source code for the Library including whatever changes were used in the work (which must be distributed under Sections 1 and 2 above); and, if the work is an executable linked with the Library, with the complete machine-readable "work that uses the Library", as object code and/or source code, so that the user can modify the Library and then relink to produce a modified executable containing the modified Library. (It is understood that the user who changes the contents of definitions files in the

Library will not necessarily be able to recompile the application to use the modified definitions.)

b) Use a suitable shared library mechanism for linking with the Library. A suitable mechanism is one that (1) uses at run time a copy of the library already present on the user's computer system, rather than copying library functions into the executable, and (2) will operate properly with a modified version of the library, if the user installs one, as long as the modified version is interface-compatible with the version that the work was made with.

c) Accompany the work with a written offer, valid for at least three years, to give the same user the materials specified in Subsection 6a, above, for a charge no more than the cost of performing this distribution.

d) If distribution of the work is made by offering access to copy from a designated place, offer equivalent access to copy the above specified materials from the same place.

e) Verify that the user has already received a copy of these materials or that you have already sent this user a copy.

For an executable, the required form of the "work that uses the Library" must include any data and utility programs needed for reproducing the executable from it. However, as a special exception, the materials to be distributed need not include anything that is normally distributed (in either source or binary form) with the major components (compiler, kernel, and so on) of the operating system on which the executable runs, unless that component itself accompanies the executable.

It may happen that this requirement contradicts the license restrictions of other proprietary libraries that do not normally accompany the operating system. Such a contradiction means you cannot use both them and the Library together in an executable that you distribute.

7. You may place library facilities that are a work based on the Library side-by-side in a single library together with other library facilities not covered by this License, and distribute such a combined library, provided that the separate distribution of the work based on the Library and of the other library facilities is otherwise permitted, and provided that you do these two things:

a) Accompany the combined library with a copy of the same work based on the Library, uncombined with any other library facilities. This must be distributed under the terms of the Sections above.

b) Give prominent notice with the combined library of the fact that part of it is a work based on the Library, and explaining where to find the accompanying uncombined form of the same work.

8. You may not copy, modify, sublicense, link with, or distribute the Library except as expressly provided under this License. Any attempt otherwise to copy, modify, sublicense, link with, or distribute the Library is void, and will automatically terminate your rights under this License. However, parties who have received copies, or rights, from you under this License will not have their licenses terminated so long as such parties remain in full compliance.

9. You are not required to accept this License, since you have not signed it. However, nothing else grants you permission to modify or distribute the Library or its derivative works. These actions are prohibited by law if you do not accept this License. Therefore, by modifying or distributing the Library (or any work based on the Library), you indicate your acceptance of this License to do so, and all its terms and conditions for copying, distributing or modifying the Library or works based on it.

10. Each time you redistribute the Library (or any work based on the Library), the recipient automatically receives a license from the original licensor to copy, distribute, link with or modify the Library subject to these terms and conditions. You may not impose any further restrictions on the recipients' exercise of the rights granted herein.

You are not responsible for enforcing compliance by third parties with this License.

11. If, as a consequence of a court judgment or allegation of patent infringement or for any other reason (not limited to patent issues), conditions are imposed on you (whether by court order, agreement or otherwise) that contradict the conditions of this License, they do not excuse you from the conditions of this License. If you cannot distribute so as to satisfy simultaneously your obligations under this License and any other pertinent obligations, then as a consequence you may not distribute the Library at all. For example, if a patent license would not permit royalty-free redistribution of the Library by all those who receive copies directly or indirectly through you, then the only way you could satisfy both it and this License would be to refrain entirely from distribution of the Library.

If any portion of this section is held invalid or unenforceable under any particular circumstance, the balance of the section is intended to apply, and the section as a whole is intended to apply in other circumstances.

It is not the purpose of this section to induce you to infringe any patents or other property right claims or to contest validity of any such claims; this section has the sole purpose of protecting the integrity of the free software distribution system which is implemented by public license practices. Many people have made generous contributions to the wide range of software distributed through that system in reliance on consistent application of that system; it is up to the author/donor to decide if he or she is willing to distribute software through any other system and a licensee cannot impose that choice.

This section is intended to make thoroughly clear what is believed to be a consequence of the rest of this License.

12. If the distribution and/or use of the Library is restricted in certain countries either by patents or by copyrighted interfaces, the original copyright holder who places the Library under this License may add an explicit geographical distribution limitation excluding those countries,

so that distribution is permitted only in or among countries not thus excluded. In such case, this License incorporates the limitation as if written in the body of this License.

13. The Free Software Foundation may publish revised and/or new versions of the Lesser General Public License from time to time. Such new versions will be similar in spirit to the present version, but may differ in detail to address new problems or concerns.

Each version is given a distinguishing version number. If the Library specifies a version number of this License which applies to it and "any later version", you have the option of following the terms and conditions either of that version or of any later version published by the Free Software Foundation. If the Library does not specify a license version number, you may choose any version ever published by the Free Software Foundation.

14. If you wish to incorporate parts of the Library into other free programs whose distribution conditions are incompatible with these, write to the author to ask for permission. For software which is copyrighted by the Free Software Foundation, write to the Free Software Foundation; we sometimes make exceptions for this. Our decision will be guided by the two goals of preserving the free status of all derivatives of our free software and of promoting the sharing and reuse of software generally.

NO WARRANTY

15. BECAUSE THE LIBRARY IS LICENSED FREE OF CHARGE, THERE IS NO WARRANTY FOR THE LIBRARY, TO THE EXTENT PERMITTED BY APPLICABLE LAW. EXCEPT WHEN OTHERWISE STATED IN WRITING THE COPYRIGHT HOLDERS AND/OR OTHER PARTIES PROVIDE THE LIBRARY "AS IS" WITHOUT WARRANTY OF ANY KIND, EITHER EXPRESSED OR IMPLIED, INCLUDING, BUT NOT LIMITED TO, THE IMPLIED WARRANTIES OF MERCHANTABILITY AND FITNESS FOR A PARTICULAR PURPOSE. THE ENTIRE RISK AS TO THE QUALITY AND PERFORMANCE OF THE LIBRARY IS WITH YOU. SHOULD THE LIBRARY PROVE DEFECTIVE, YOU ASSUME THE COST OF ALL NECESSARY SERVICING, REPAIR OR CORRECTION.

16. IN NO EVENT UNLESS REQUIRED BY APPLICABLE LAW OR AGREED TO IN WRITING WILL ANY COPYRIGHT HOLDER, OR ANY OTHER PARTY WHO MAY MODIFY AND/OR REDISTRIBUTE THE LIBRARY AS PERMITTED ABOVE, BE LIABLE TO YOU FOR DAMAGES, INCLUDING ANY GENERAL, SPECIAL, INCIDENTAL OR CONSEQUENTIAL DAMAGES ARISING OUT OF THE USE OR INABILITY TO USE THE LIBRARY (INCLUDING BUT NOT LIMITED TO LOSS OF DATA OR DATA BEING RENDERED INACCURATE OR LOSSES SUSTAINED BY YOU OR THIRD PARTIES OR A FAILURE OF THE LIBRARY TO OPERATE WITH ANY OTHER SOFTWARE), EVEN IF SUCH HOLDER OR OTHER PARTY HAS BEEN ADVISED OF THE POSSIBILITY OF SUCH DAMAGES.

END OF TERMS AND CONDITIONS

How to Apply These Terms to Your New Libraries

If you develop a new library, and you want it to be of the greatest possible use to the public, we recommend making it free software that everyone can redistribute and change. You can do so by permitting redistribution under these terms (or, alternatively, under the terms of the ordinary General Public License).

To apply these terms, attach the following notices to the library. It is safest to attach them to the start of each source file to most effectively convey the exclusion of warranty; and each file should have at least the "copyright" line and a pointer to where the full notice is found.

```
<one line to give the library's name and a brief idea of what it does.>  
Copyright (C) <year> <name of author>
```

```
This library is free software; you can redistribute it and/or  
modify it under the terms of the GNU Lesser General Public  
License as published by the Free Software Foundation; either  
version 2.1 of the License, or (at your option) any later version.
```

```
This library is distributed in the hope that it will be useful,  
but WITHOUT ANY WARRANTY; without even the implied warranty of  
MERCHANTABILITY or FITNESS FOR A PARTICULAR PURPOSE. See the GNU  
Lesser General Public License for more details.
```

You should have received a copy of the GNU Lesser General Public License along with this library; if not, write to the Free Software Foundation, Inc., 51 Franklin Street, Fifth Floor, Boston, MA 02110-1301 USA

Also add information on how to contact you by electronic and paper mail.

You should also get your employer (if you work as a programmer) or your school, if any, to sign a "copyright disclaimer" for the library, if necessary. Here is a sample; alter the names:

Yoyodyne, Inc., hereby disclaims all copyright interest in the library `Frob' (a library for tweaking knobs) written by James Random Hacker.

<signature of Ty Coon>, 1 April 1990

Ty Coon, President of Vice

That's all there is to it!

- source code

You can download the source code from the following URL.

https://eww.pass.panasonic.co.jp/pro-av/support/content/download/JP/jp2main/vusb_j.htm

https://eww.pass.panasonic.co.jp/pro-av/support/content/download/EN/ep2main/vusb_e.htm